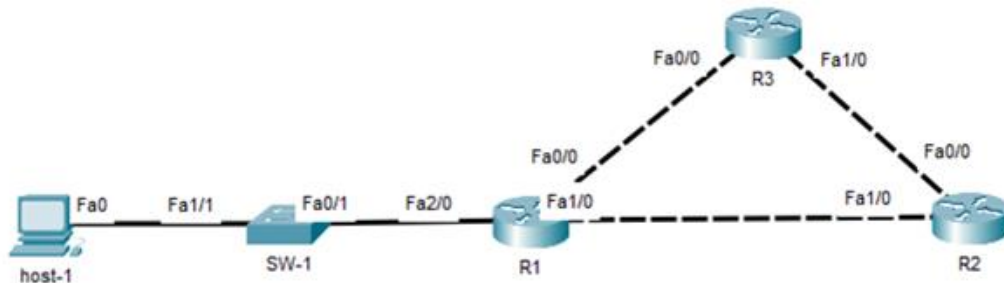


Loopback Interface

Lab Summary

Configure loopback interfaces on R1, R2, and R3 for management traffic purposes.

Figure 1 Lab Topology



Lab Configuration

Start Packet Tracer File: **loopback interface.pkt**

Click on *R1* icon and select *CLI* folder.

Step 1: Enter global configuration mode.

```
R1 > enable  
R1# configure terminal
```

Step 2: Configure enable secret password *cisconet*.

```
R1(config)# enable secret cisconet
```

Step 3: Configure a management loopback0 interface 192.168.255.1/32

```
R1(config)# interface Loopback 0  
R1(config-if)# description management interface  
R1(config-if)# ip address 192.168.255.1 255.255.255.255  
R1(config-if)# no shutdown  
R1(config-if)# exit
```

Step 4: Configure VTY lines 0 4 for remote management with password *ccnalabs* and save the running configuration.

```
R1(config)# line vty 0 4  
R1(config-line)# password ccnalabs  
R1(config-line)# login
```

```
R1(config-line)# end  
R1# copy running-config startup-config
```

Click on *R2* icon and select *CLI* folder.

Step 5: Enter global configuration mode

```
R2 > enable  
R2# configure terminal
```

Step 6: Configure a management loopback0 interface 192.168.255.2/32

```
R2(config)# interface Loopback 0  
R2(config-if)# description management interface  
R2(config-if)# ip address 192.168.255.2 255.255.255.255  
R2(config-if)# no shutdown  
R2(config-if)# exit
```

Step 7: Configure username cisco with privilege level 15 and secret password *ccnalabs* for remote authentication of Telnet session.

```
R2(config)# username cisco privilege 15 secret ccnalabs
```

Step 8: Configure VTY lines 0 4 for remote management with local authentication and save the running configuration.

```
R2(config)# line vty 0 4  
R2(config-line)# login local  
R2(config-line)# end  
R2# copy running-config startup-config
```

Click on *R3* icon and select *CLI* folder.

Step 9: Enter global configuration mode

```
R3 > enable  
R3# configure terminal
```

Step 10: Configure enable secret password *cisconet*

```
R3(config)# enable secret cisconet
```

Step 11: Configure a management loopback0 interface 192.168.255.3/32

```
R3(config)# interface Loopback 0  
R3(config-if)# description management interface  
R3(config-if)# ip address 192.168.255.3 255.255.255.255
```

```
R3(config-if)# no shutdown  
R3(config-if)# exit
```

Step 12: Configure VTY lines 0 4 for remote management with password *ccnalabs* and save the running configuration.

```
R3(config)# line vty 0 4  
R3(config-line)# password ccnalabs  
R3(config-line)# login  
R3(config-line)# end  
R3# copy running-config startup-config
```

Step 13: Verify Lab

Start a Telnet session from host-1 to each router loopback interface and verify remote management access.

```
host: c:\> telnet 192.168.255.1 (R1)  
Password: ccnalabs  
R1> enable  
Password: cisconet  
R1# exit
```

```
host: c:/> telnet 192.168.255.2 (R2)  
Username: cisco  
Password: ccnalabs  
R2> enable  
R2# exit
```

```
host: c:/> telnet 192.168.255.3 (R3)  
Password: ccnalabs  
R3> enable  
Password: cisconet  
R3# exit
```

Lab Notes

Telnet to R2 did not require any typing of enable password for access. There is a local account (**cisco**) on R2 configured with privilege level 15 that you authenticated previously. The command **login local** is configured on VTY lines to enable authentication based on that local account.